

JUNE, 1979

CYPRESS SHORES

A PLANNED UNIT DEVELOPMENT

BEING A REPLAT OF LOTS 10 THROUGH 16, INCLUSIVE, BLOCK 1, ALONG WITH LOTS 1, 2 and 3, BLOCK 2, SOUTH SHORE No. 3 OF WELLINGTON

AS RECORDED IN PLAT BOOK 33, PAGES 1 and 2 LYING IN SECTION 10, TOWNSHIP 44 SOUTH, RANGE 41 EAST, PALM BEACH COUNTY, FLORIDA.

UNPLATTED LANDS

COUNTY APPROVALS

SEAL OF COUNTY COMMISSIONERS
PALM BEACH COUNTY, FLORIDA

THIS PLAT IS HEREBY APPROVED FOR RECORD ON THIS 7 DAY OF
October 1979

BY: *[Signature]*
STILL BALLEW, CHAIRMAN

COUNTY ENGINEER
TALL BEACH COUNTY, FLORIDA

THIS PLAT IS HEREBY APPROVED FOR RECORD THIS 7 DAY OF
October 1979

BY: *[Signature]*
W. F. KIMMEL, P.E.
COUNTY ENGINEER

ATTORNEY
WOMER R. THORNTON, CLERK
BOARD OF COUNTY COMMISSIONERS

BY: *[Signature]*
DEPUTY CLERK

1
1
2

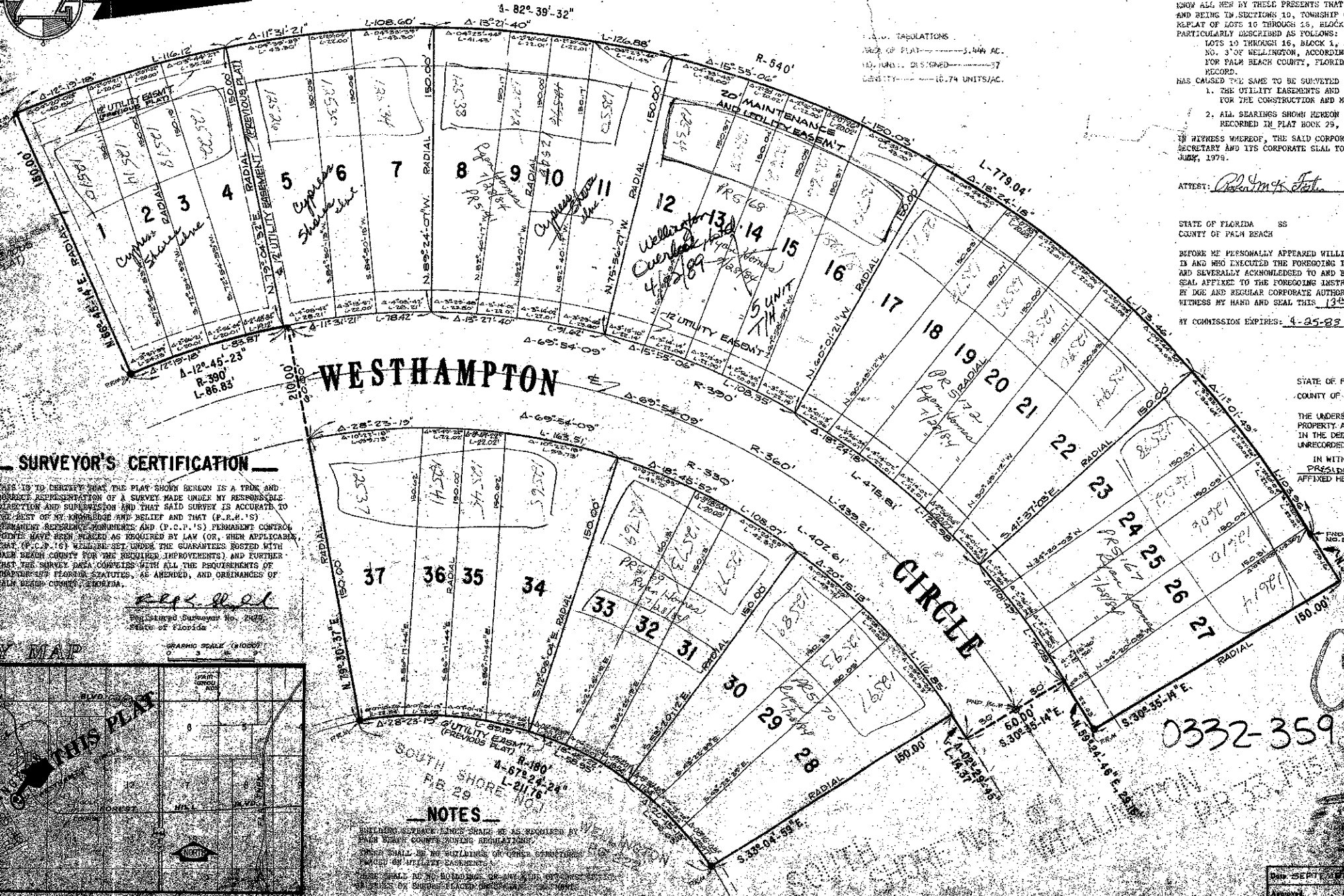
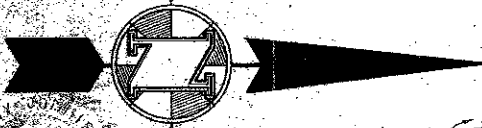
STATE OF FLORIDA
COUNTY OF PALM BEACH

THIS PLAT WAS FILED FOR RECORD AT
9:34 A.M. THIS 21 DAY OF October
1979 AND DULY RECORDED IN PLAT BOOK
NO. 33, PAGE 1 AND 2.

JOHN R. DAY, ATTORNEY AT LAW
BY: *[Signature]*

GRAPHIC SCALE
50' INTERVAL 0 50' INTERVAL 50'

SCALE: 1 IN. = 30 FT.



TITLE CERTIFICATION

STATE OF FLORIDA
COUNTY OF PALM BEACH

I, JOHN R. DAY, A DULY LICENSED ATTORNEY IN THE STATE OF FLORIDA, DO HEREBY CERTIFY THAT I HAVE EXAMINED THE TITLE TO THE HEREIN DESCRIBED PROPERTY, THAT I FIND TITLE TO LOTS 10 THROUGH 16, INCLUSIVE, BLOCK 1, ALONG WITH LOTS 1, 2 & 3, BLOCK 2, SOUTH SHORE NO. 3 OF WELLINGTON, AS RECORDED IN PLAT BOOK 33, PAGES 1 & 2, IS VESTED TO THE PEOPLE FISCAL CORPORATION, THAT THE CORPUS BONES HAVE BEEN PAID, AND I FIND THAT THE PROPERTY IS FREE OF ENCUMBRANCES BY MORTGAGES, EXCEPT FOR THOSE MORTGAGES SHOWN HERON.

DATE SIGNED: 7-16-79
JOHN R. DAY
ATTORNEY AT LAW

DEDICATION

STATE OF FLORIDA
COUNTY OF PALM BEACH

KNOW ALL MEN BY THESE PRESENTS THAT PEOPLES FISCAL CORPORATION, A FLORIDA CORPORATION IS THE OWNER OF A TRACT OF LAND Lying in Sections 10, Township 44 South, Range 41 East, Palm Beach County, Florida, shown hereon as 'CYPRESS SHORES' A REPLAT OF LOTS 10 THROUGH 16, BLOCK 1 ALONG WITH LOTS 1, 2 & 3, BLOCK 2 OF SOUTH SHORE NO. 3 OF WELLINGTON AND HEREON PARTICULARLY DESCRIBED AS FOLLOWS:

LOTS 10 THROUGH 16, BLOCK 1, ALONG WITH LOTS 1, 2 & 3, BLOCK 2, AS SHOWN ON THE PLAT OF SOUTH SHORE NO. 3 OF WELLINGTON, ACCORDING TO THE PLAT THEREOF ON FILE WITH THE CLERK OF CIRCUIT COURT IN AND FOR PALM BEACH COUNTY, FLORIDA, RECORDED IN PLAT BOOK 33, PAGES 1 and 2, SUBJECT TO RIGHTS-OF-WAY OF RECORD.

HAS CAUSED THE SAME TO BE SURVEYED AND PLATTED AS SHOWN HEREON AND DO HEREBY DEDICATE AS FOLLOWS:

1. THE UTILITY EASEMENTS AND DRAINAGE EASEMENTS AS SHOWN HEREON ARE HEREBY DEDICATED IN PERPETUITY FOR THE CONSTRUCTION AND MAINTENANCE OF UTILITIES AND DRAINAGE.
2. ALL BEARINGS SHOWN HEREON ARE REFERENCED TO THE RECORDED PLAT OF SOUTH SHORE NO. 1 OF WELLINGTON RECORDED IN PLAT BOOK 29, PAGES 222-228.

IN WITNESS WHEREOF, THE SAID CORPORATION HAS CAUSED THESE PRESENTS TO BE SIGNED BY ITS PRESIDENT AND ATTESTED BY ITS SECRETARY AND ITS CORPORATE SEAL TO BE AFFIXED HERETO BY AND WITH THE AUTHORITY OF ITS BOARD OF DIRECTORS THIS 13th DAY OF JUNE, 1979.

PEOPLES FISCAL CORPORATION
BY: *[Signature]* PRESIDENT
BY: *[Signature]* SECRETARY

ACKNOWLEDGEMENT

STATE OF FLORIDA
COUNTY OF PALM BEACH

BEFORE ME PERSONALLY APPEARED WILLIAM G. WEST AND *[Signature]*, TO ME WELL KNOWN AND KNOWN TO ME BY REPUTATION, AND WHO ENCLOSED THE FOREGOING INSTRUMENT AS PRESIDENT AND SECRETARY OF PEOPLES FISCAL CORPORATION, A CORPORATION AND SEVERALLY ACKNOWLEDGED TO AND BEFORE ME THAT THEY EXECUTED SUCH INSTRUMENT AS OFFICERS OF SAID CORPORATION, AND THAT THE SEAL AFFIXED TO THE FOREGOING INSTRUMENT IS THE CORPORATE SEAL OF SAID CORPORATION AND THAT IT WAS AFFIXED BY SAID PRESIDENT BY DEE AND REGULAR CORPORATE AUTHORITY, AND THAT SAID INSTRUMENT IS THE TRUE AND CORRECT DEED OF SAID CORPORATION. WITNESS MY HAND AND SEAL THIS 13th DAY OF JUNE, 1979.

BY COMMISSION EXPIRES: 4-25-83
WILLIAM G. WEST
NOTARIAL PUBLIC

MORTGAGEE'S CONSENT

STATE OF FLORIDA
COUNTY OF PALM BEACH

THE UNDERSIGNED HEREBY CERTIFIES THAT IT IS THE HOLDER OF A MORTGAGE ON THE HEREIN DESCRIBED PROPERTY AND THAT IT DOES HEREBY JOIN IN AND CONSENTS TO THE DEDICATION OF THE LANDS HEREIN DESCRIBED IN THE DEDICATION HERETO, BY THE OWNER THEREOF, AND AGREES THAT ITS MORTGAGE, WHICH IS AN UNRECORDED INTERCOMPANY MORTGAGE, SHALL BE SUBORDINATED TO THE DEDICATION THEREOF.

IN WITNESS WHEREOF THE UNDERSIGNED CORPORATION HAS CAUSED THESE PRESENTS TO BE SIGNED BY ITS PRESIDENT AND ATTESTED TO BY ITS SECRETARY AND THAT THE SEAL AFFIXED HERETO BY AND WITH THE AUTHORITY OF ITS BOARD OF DIRECTORS THIS 13th DAY OF JUNE, 1979.

PEOPLES FISCAL CORPORATION
BY: *[Signature]* PRESIDENT
BY: *[Signature]* SECRETARY

ACKNOWLEDGEMENT

STATE OF FLORIDA
COUNTY OF PALM BEACH

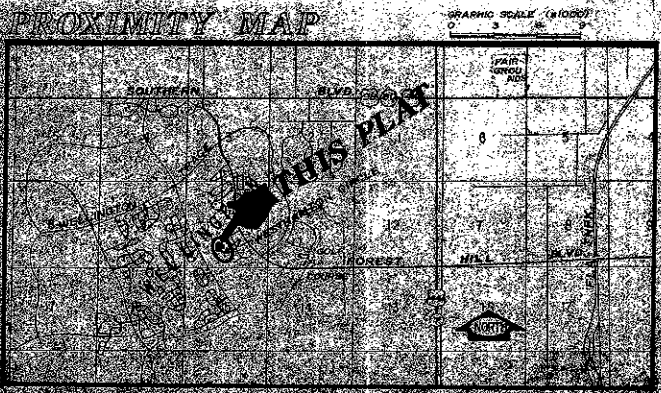
BEFORE ME PERSONALLY APPEARED RICHARD L. SHEPHERD AND *[Signature]*, TO ME WELL KNOWN AND KNOWN TO ME BY REPUTATION, AND WHO ENCLOSED THE FOREGOING INSTRUMENT AS PRESIDENT AND SECRETARY OF PEOPLES FISCAL CORPORATION, A CORPORATION AND SEVERALLY ACKNOWLEDGED TO AND BEFORE ME THAT THEY EXECUTED SUCH INSTRUMENT AS OFFICERS OF SAID CORPORATION, AND THAT THE SEAL AFFIXED TO THE FOREGOING INSTRUMENT IS THE CORPORATE SEAL OF SAID CORPORATION AND THAT IT WAS AFFIXED BY SAID PRESIDENT BY DEE AND REGULAR CORPORATE AUTHORITY, AND THAT SAID INSTRUMENT IS THE TRUE AND CORRECT DEED OF SAID CORPORATION. WITNESS MY HAND AND SEAL THIS 13th DAY OF JUNE, 1979.

RICHARD L. SHEPHERD & ASSOC., INC.
CORPORATE SEAL SURVEYOR'S SEAL

SURVEYOR'S CERTIFICATION

THIS IS TO CERTIFY THAT THE PLAT SHOWN HEREON IS A TRUE AND CORRECT REPRESENTATION OF A SURVEY MADE UNDER MY RESPONSIBLE DIRECTION AND SUPERVISION AND THAT SAID SURVEY IS ACCURATE TO THE BEST OF MY KNOWLEDGE AND BELIEF AND THAT (P.R.M.'S) PERMANENT REFERENCE MONUMENTS AND (P.C.P.'S) PERMANENT CONTROL POINTS HAVE BEEN WEIGHED AS REQUIRED BY LAW (OR, WHEN APPLICABLE, THAT (P.C.P.'S) WILL BE SET UNDER THE GUARANTEES POSTED WITH PALM BEACH COUNTY FOR THE REQUIRED IMPROVEMENTS) AND FURTHER THAT THE SURVEY DATA CONFORMS WITH ALL THE REQUIREMENTS OF CHAPTER 129, FLORIDA STATUTES, AS AMENDED, AND ORDINANCES OF PALM BEACH COUNTY, FLORIDA.

[Signature]
Registered Surveyor No. 1025
State of Florida



NOTES

BEARING SURVEY LINES SHALL BE AS REQUIRED BY THE STATE ENGINEERING BOARD.

THIS PLAT IS A REPLAT OF LOTS 10 THROUGH 16, BLOCK 1, ALONG WITH LOTS 1, 2 AND 3, BLOCK 2, SOUTH SHORE NO. 3 OF WELLINGTON, AS RECORDED IN PLAT BOOK 33, PAGES 1 AND 2.